

**Announcement: St. Joseph Island: Jocelyn and St. Joseph townships**

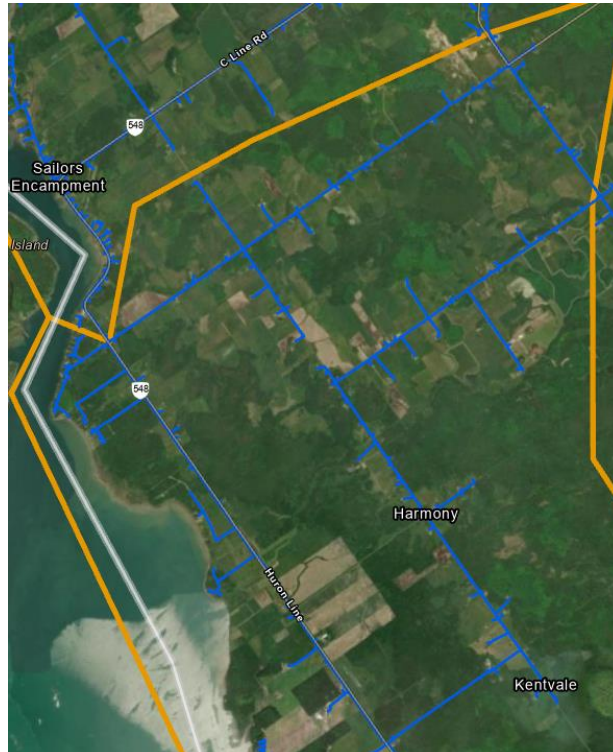
**Cycle Line Clearing and Brush Control**

API will be trimming and removing trees within the ROW Clearance Standard and the removal of dead or hazardous trees beyond the ROW edge to manage tree growth and hazard trees encroaching and/or falling into the lines. Along with line clearing, API will also be removing tall brush and or shrubs by manual (brush saw) or mechanical (mowing) means within the ROW to promote low-growing compatible vegetation.

All wood 4 inches or greater in diameter will be left on site in lengths not exceeding 4 feet and is the responsibility of the property owner.

**ROW Clearance Standards (along API-owned lines)**

Type of Power Line	Distance (either side of power line)
New Primary line	20' / 6m
Existing Primary line	15' / 4.5m
Secondary Service (feeding your house/camp)	3' / 1m
Secondary System (feeding multiple houses/camps)	5' / 1.5m
Underground primary	10' / 3m



This work is scheduled to start in April, so please call (705) 256-3850 or email [forestry@algomapower.com](mailto:forestry@algomapower.com), if you have any questions or concerns.